

How do I prepare for my MRI examination?

If you are having a standard exam with no contrast, no special preparation is needed. You may eat and take medication as usual. If your doctor orders a contrast exam, you may be asked not to eat or drink four hours prior to the exam, though you can take routine medication with a small amount of water. Please wear loose clothing with no metal parts (sweat pants/shirt, shorts, polo shirts, etc.) and avoid heavy eye shadow the day of the exam.

If you have any of the following conditions, please tell the technologist prior to entering the scan room:

- Intrauterine Device (IUD)
- Pregnant
- Surgical metal implants
- Joint replacement
- Brain aneurysm surgical clips
- Hearing aid
- Cochlear (ear) implant
- Ocular (eye) implant
- Artificial heart valve
- Cardiac pacemaker
- Infusion pump
- Neuro-Stimulator
- Metal in the eye

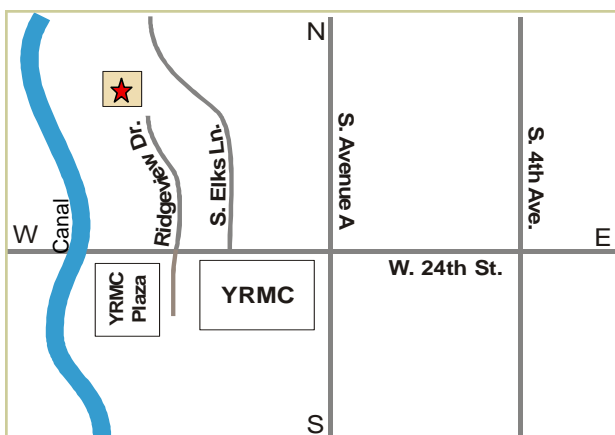
WHAT IF I CAN'T MAKE MY APPOINTMENT?

Please be on time for your appointment. If you must cancel or reschedule, call us at least 24 hours in advance. Other patients with appointments will appreciate this courtesy. We have extended office hours for your convenience.

Advanced Radiology Healthcare, LLC

Promed Medical Complex
 2270 S. Ridgeview Dr., Suite 127
 Yuma, Arizona 85364
 Phone: 928.317.0470
 Fax: 928.317.0467

Advanced Radiology Healthcare is located in the Promed Medical Complex across West 24th Street opposite Yuma Regional Medical Center. The street sign for Ridgeview Drive currently says "Hospital". However, you will see signs for our facility. If you are going west on West 24th Street and have passed the canal, you have gone too far.



YOUR APPOINTMENT

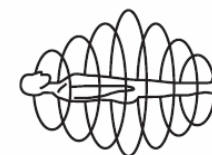
Name _____

Date _____

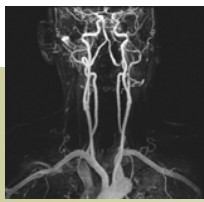
Time _____ : _____ AM / PM

Advanced Radiology Healthcare, LLC

Magnetic Resonance Imaging



Convenience you desire.
 Technology you need.



WHAT IS MRI AND WHY DO I NEED ONE?

Magnetic Resonance Imaging uses magnetism and radio waves to take “pictures” of the inside of your body. MRI gives a more detailed image of the soft tissue of your body than x-rays. With this information, your doctor can better understand and diagnose your condition.

ADVANTAGES OF 3.0 TESLA MRI

Tesla is a measure of the magnetic strength of the MRI. The higher the magnetic power, the better the image quality. Better image quality gives more information to your doctor which ultimately results in more accurate diagnosis of your condition. Since the 3.0 Tesla MRI is the highest power MRI available in the world for clinical scans, you are receiving the finest quality scan available.

Besides better image quality, the 3.0 Tesla MRI is able to perform certain types of scans that lower powered MRIs cannot. For certain diagnoses, your doctor and radiologist will be able to get information not available with lower powered MRI machines.

Additionally, the increased power of the 3.0 Tesla MRI allows many scans to be done in less time. Since MRI scans usually require that you remain motionless, shorter scan times help make your MRI scan more comfortable.

WHAT HAPPENS DURING MY MRI TEST?

When you arrive, the MRI staff will ask some questions to verify that MRI is right for you. They will make sure your clothing is suitable for the test and will ask you to put on exam garments in a dressing room. You may be asked to remove glasses, dentures, jewelry or other items. Your purse or wallet will be safely stored outside of the scan room, as the MRI machine may damage magnetic codes on credit or ID cards you carry.

Once in the scan room, you will lie down on a padded table and be positioned correctly by



staff. You will remain as still as possible while the exam is in progress; usually about 45 minutes. You will hear vibrations and other sounds while the machine is operating. If a headset doesn't interfere with the scan, you may listen to

music or watch a movie on our video system. You may bring your own or watch one of ours. A technologist is nearby at all times and can hear you if you need anything.

For contrast exams, your doctor may ask that we give you an injection to enhance the MRI images. The injection is small and very safe.

After the exam, you will change back into your clothing and pick up other possessions. That's it; you are through. The Radiologist will review the images and a report will typically go to your doctor within 24 hours.

GETTING YOUR RESULTS

Advanced Radiology Healthcare is absolutely committed to the highest level of service. This includes getting accurate radiology readings to your doctor as quickly as possible. Your doctor should have a preliminary reading within one business day of your scan, and a final report within two business days. This level of service is made possible by a sophisticated computerized digital imaging and storage system used by our radiology professionals at Medical Diagnostic Imaging Group, Ltd.

IF YOU HAVE QUESTIONS

Please feel free to call us at **(928) 317-0470** or stop by to look at the scanner and speak with one of our technologists. We'll do our best to answer any questions or concerns you may have.